

Beacon GSM

Remote monitoring and
alarm notification system

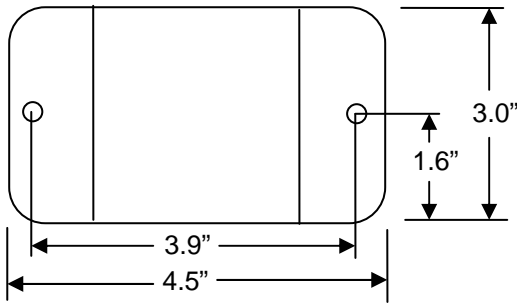


Antx, inc. P.O. Box 200816 Austin, TX 78720
877-686-2689 512-255-8306 (fax)
www.antx.com

Installation and Wiring

Mounting

Mount the Beacon using the 2 mounting holes on the sides of the unit.



GSM power

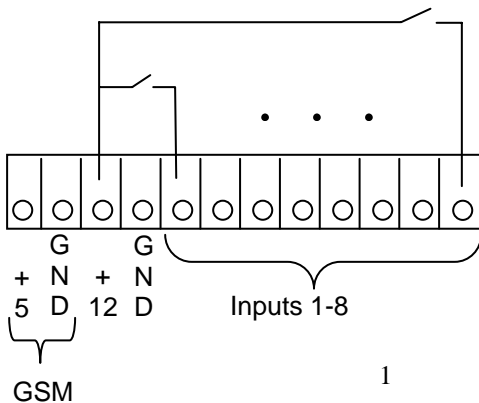
Connect the GSM power plug to the left-most screw positions. The left most is for 5VDC (+) the 2nd left-most is for GND (-)

Power Wiring

Connect the 12VDC power supply to the 3rd and 4th left-most positions.

Input Wiring

The Beacon detects a dry-contact or wet-contact up to 12VDC. If you are using a dry-contact, connect the 12VDC power to one side of the dry contact and the other side of the dry contact to the specific input desired.



Operation

The Beacon monitors all 8 inputs continuously. When any input makes a transition from open to closed and when all inputs return to the open condition, the Beacon calls the Antx Tracking toll-free number and delivers the current state of all inputs. The Antx Tracking system delivers any notification messages the user has specified.

Off-Hook LED

When the unit is powered up, the LED is on until the Beacon has established communication with the GSM module.

This LED will stay on if:

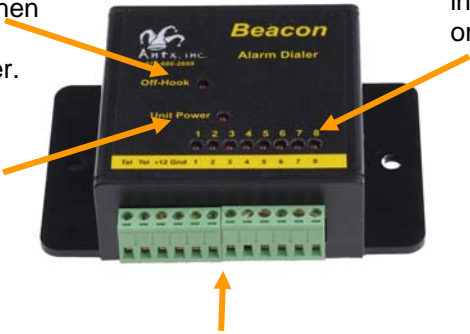
- No SIM card in GSM
- SIM card expired in GSM
- GSM powered up several seconds prior to the Beacon

The LED also goes on whenever the Beacon is transmitting a message to the Antx Tracking System.

Off Hook LED

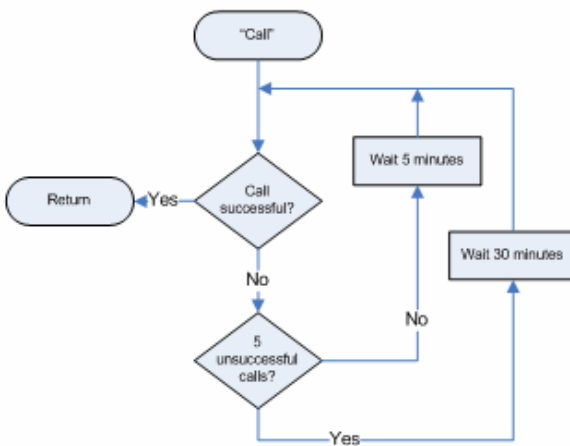
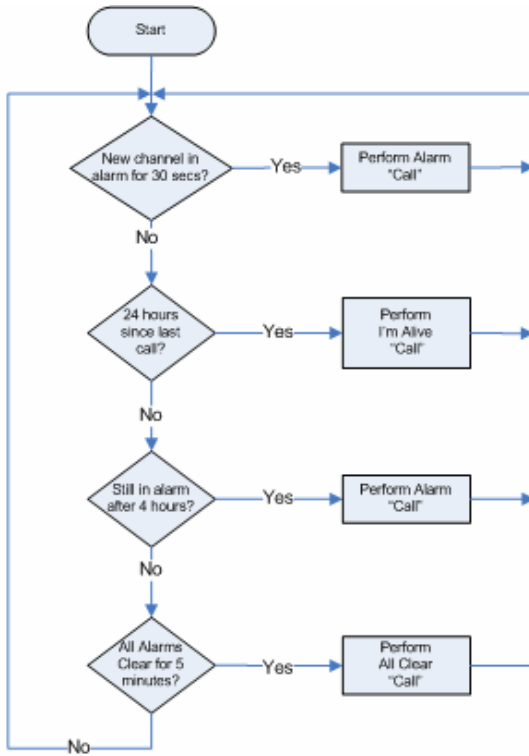
LED is On when Beacon has 12VDC power.

LED is On when input is in alarm, or on, state.



Removable connectors for easy wiring

Notification to Antx Tracking call-out flowchart



Antx Tracking Operation

When the web-based Antx Tracking system receives any message from the Beacon it sends an acknowledgement to the Beacon.

The Antx Tracking system then immediately sends out any alarm calls, e-mails or text messages to designated personnel.

For details on the Antx Tracking system refer to the on-line help.

