

Beacon

Remote monitoring and
alarm notification system

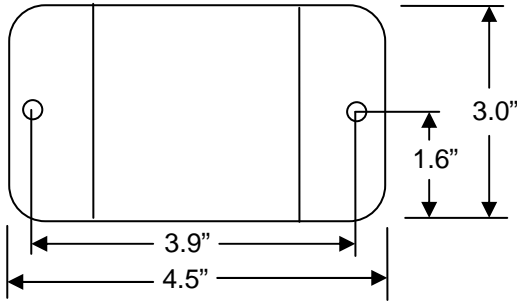


Antx, inc. P.O. Box 200816 Austin, TX 78720
877-686-2689 512-255-8306 (fax)
www.antx.com

Installation and Wiring

Mounting

Mount the Beacon using the 2 mounting holes on the sides of the unit.



Phone Wiring

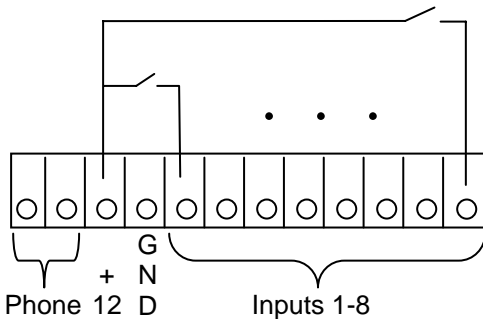
Connect the phone to the 2 left-most positions. The orientation of the wires does not matter.

Power Wiring

Connect the 12VDC power supply to the 3rd and 4th left-most positions.

Input Wiring

The Beacon detects a dry-contact or wet-contact up to 12VDC. If you are using a dry-contact, connect the 12VDC power to one side of the dry contact and the other side of the dry contact to the specific input desired.



Phone Wiring

1. Cut off one end of the ANTX supplied phone cord.
2. Strip back insulation for the 2 innermost wires in the phone cord (the 2 outer wires are not used).
3. Connect these 2 wires (polarity does not matter) to the beacon terminal labeled PHONE (see illustration).
4. The other end of the phone cord (with phone jack intact) will plug into a standard phone jack.

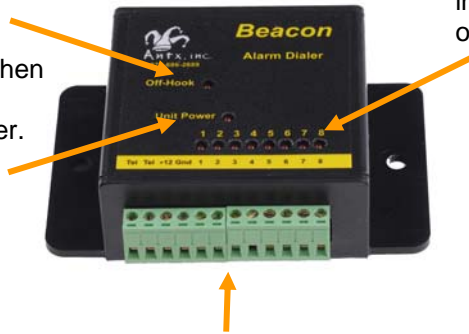
Operation

The Beacon monitors all 8 inputs continuously. When any input makes a transition from open to closed and when all inputs return to the open condition, the Beacon calls the Antx Tracking toll-free number and delivers the current state of all inputs. The Antx Tracking system delivers any notification messages the user has specified.

LED is On when Beacon is calling out.

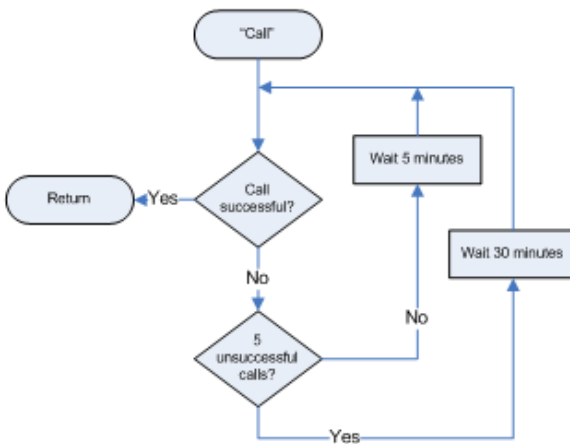
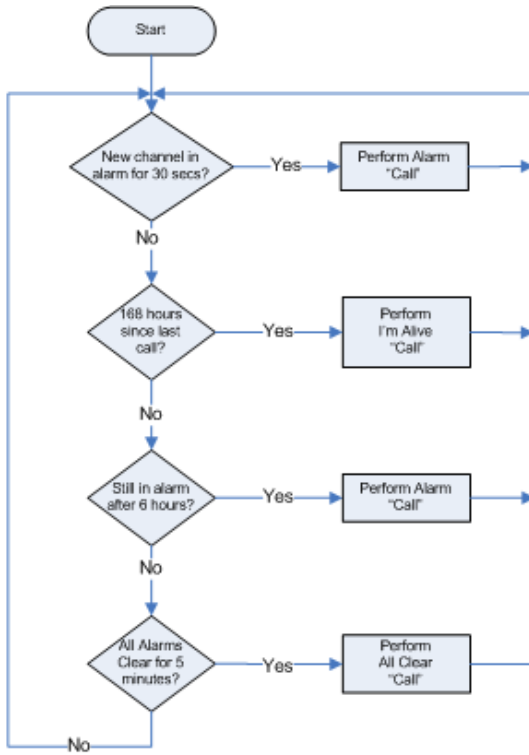
LED is On when Beacon has 12VDC power.

LED is On when input is in alarm, or on, state.



Removable connectors for easy wiring

Notification to Antx Tracking call-out flowchart



Antx Tracking Operation

When the web-based Antx Tracking system receives any message from the Beacon it sends an acknowledgement to the Beacon.

The Antx Tracking system then immediately sends out any alarm calls, e-mails or text messages to designated personnel.

For details on the Antx Tracking system refer to the on-line help.

